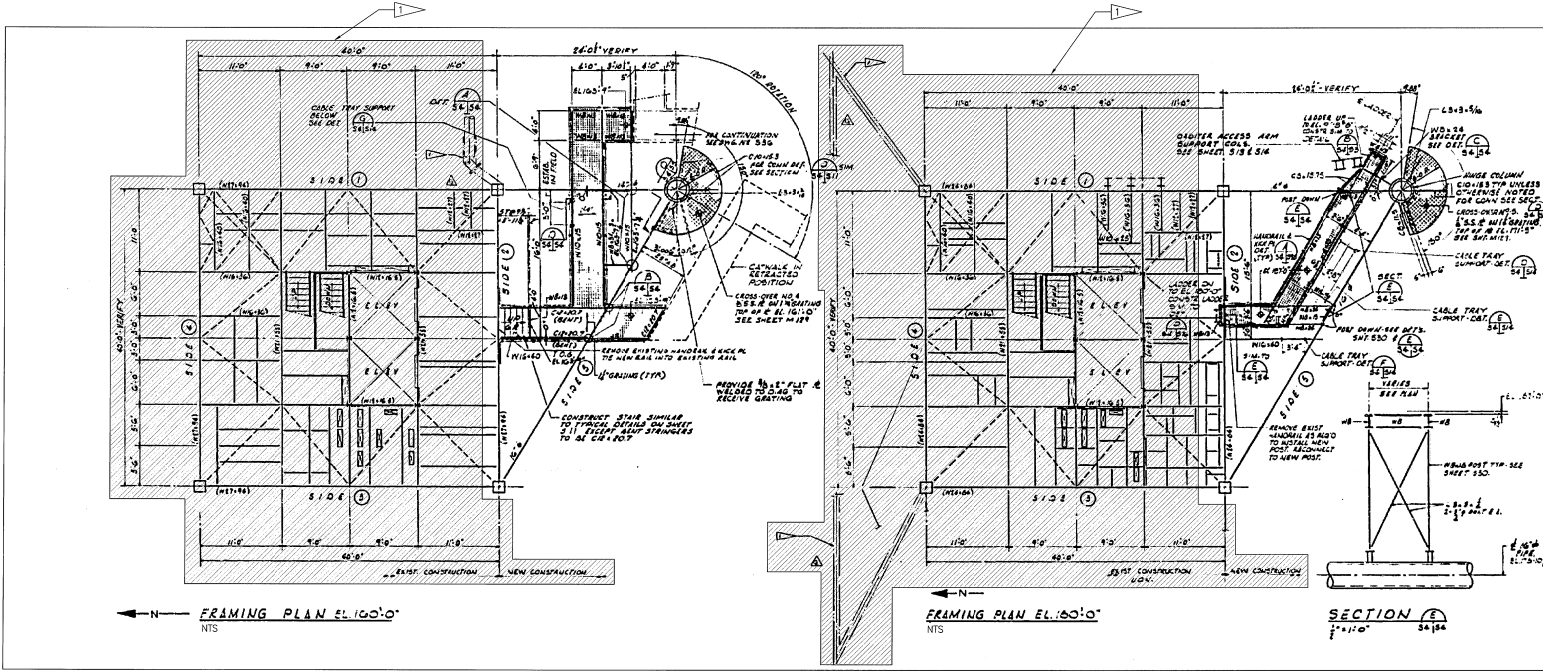
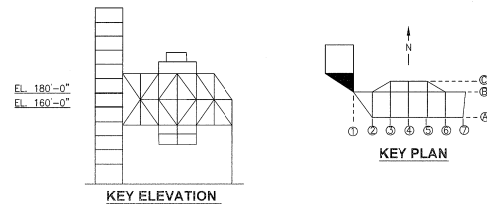


NOTICE: When Government drawings, specifications, or other data are used for any purpose other than in connection with a defined contract, the Government assumes no responsibility for the use of such drawings, specifications, or other data. It is the responsibility of the contractor to verify the accuracy of such data and to protect the contractor's interest in any way suggested by the manufacturer, publisher, or other source. The contractor shall be held responsible for any error or omission in any matter relating to the quality of any other portion of the work, or for any error or omission in any matter relating to the quality of any other portion of the work, or for any error or omission in any matter relating to the quality of any other portion of the work, or for any error or omission in any matter relating to the quality of any other portion of the work.

**FLAG NOTES**  
 SEE SHEETS S19-S30 FOR MAIN FSS FRAMING.



**FSS - HINGE COLUMN FRAMING - PLANS EL. 160 FT AND 180 FT**  
 NTS - SOURCE FILE 79K14110 SHEET S4



THIS SPACE RESERVED	
STM	ZONE
DESCRIPTION	
DATE	APPROVED
REVISIONS	
THIS DRAWING CREATED IN AUTOCAD 2007 FILE FORMAT AND WILL BE REVISED ONLY ON AN AUTOCAD SYSTEM. FILE: 14005006-S33.DWG	
730 NE WALDO ROAD, GAINESVILLE, FLORIDA 32641 / (352) 377-5851 1915 S WASHINGTON AVE, SUITE 210, FT. WORTH, TEXAS 76104 / (817) 349-2550	
NATIONAL AERONAUTICS AND SPACE ADMINISTRATION JOHN F. KENNEDY SPACE CENTER, FLORIDA	
<b>LAUNCH COMPLEX 39B, DEMOLITION OF FSS/RSR AT LAUNCH COMPLEX 39B, DEMOLITION PACKAGE</b>	
<b>FSS - HINGE COLUMN FRAMING - PLANS EL. 160 FT AND 180 FT</b>	
SIGNATURES	DATE
DRAWN S. HAFERKAMP	08/24/09
CHECKED S. BHIDE	06/24/09
DESIGNED N. PONTILLO	06/24/09
SUBMITTED [Signature]	06/24/09
APPROVED [Signature]	DATE
DATE	DATE
SIZE	DWG. NO.
PROJ. NO.	88580
SHEET	48